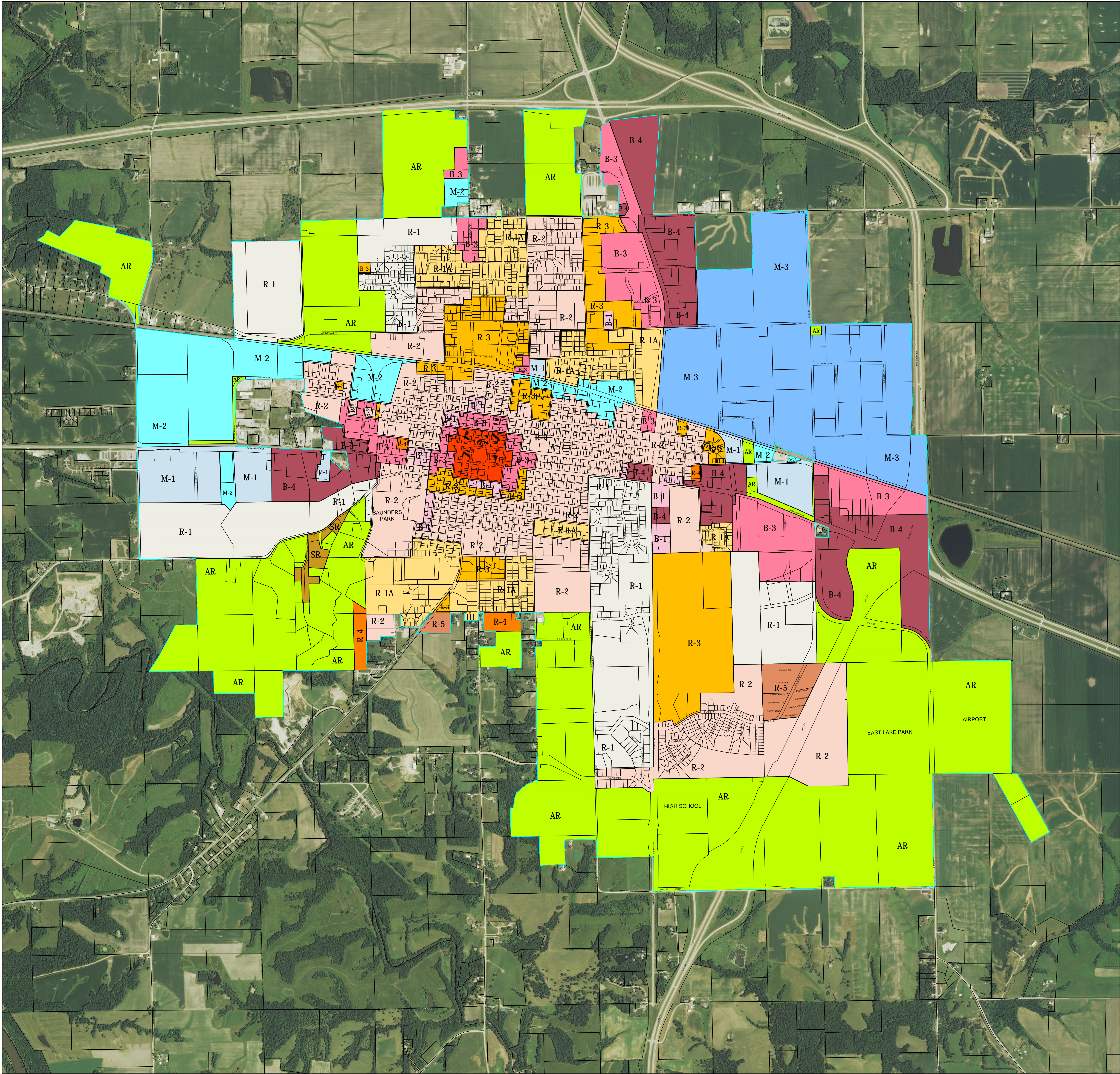
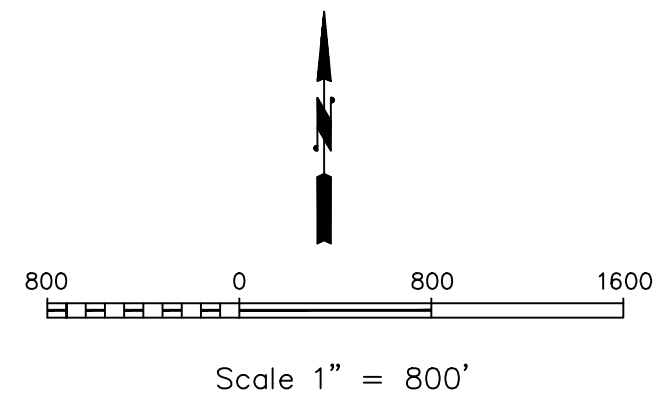


MOUNT PLEASANT ZONING MAP



LEGEND

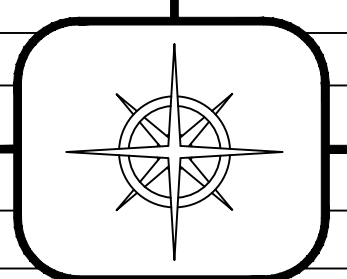
- | | |
|--|--|
| (AR) AGRICULTURAL-RESIDENTIAL RESERVE DISTRICT | (B-1) LIMITED BUSINESS AND PROFESSIONAL DISTRICT |
| (SR) SUBURBAN RESIDENTIAL DWELLING DISTRICT | (B-2) CENTRAL BUSINESS DISTRICT COMMERCIAL DISTRICT |
| (R-1) SINGLE-FAMILY DWELLING DISTRICT | (B-3) GENERAL RETAIL AND SERVICE COMMERCIAL DISTRICT |
| (R-1A) SINGLE-FAMILY DWELLING DISTRICT | (B-4) HIGHWAY SERVICE COMMERCIAL DISTRICT |
| (R-2) SINGLE- AND TWO-FAMILY DWELLING DISTRICT | (M-1) LIMITED INDUSTRIAL DISTRICT |
| (R-3) MULTIPLE-FAMILY DWELLING DISTRICT | (M-2) LIGHT INDUSTRIAL DISTRICT |
| (R-4) MOBILE HOME PARK RESIDENTIAL DISTRICT | (M-3) HEAVY INDUSTRIAL DISTRICT |
| (R-5) PLANNED RESIDENTIAL DEVELOPMENT DISTRICT | |



WARNER ENGINEERING ASSOCIATES INC.

1010 E. Washington St.
Suite 202
Mt. Pleasant, IA 52641

PROJECT ENGINEER
JAMES I. WARNER
641-919-8536



PH: (319) 385-4180
FAX: (319) 385-4401
warnereng@isico.com

PROJECT MANAGER
ROBERT A. TROUTMAN
641-919-0137

July 2, 2014